

Integration Scripts

To send SMS to our servers, you may call our 2 scripts using the following parameters.

SendSMS.asp and HTMLSendSMS.asp

1. <http://www.smsxchange.com/scripts/sendsms.asp>
2. <http://www.smsxchange.com/scripts/htmlsendsms.asp>

Backup Servers

1. <http://www2.smsxchange.com/scripts/sendsms.asp>
2. <http://www2.smsxchange.com/scripts/htmlsendsms.asp>

Security

For added security, SMSXchange now supports sending of SMS over a secured link via SSL. Simply connect to the following URL. Connecting to this URL is slower due to encryption but will ensure that your userid / password is not captured by IP packet detectors.

1. <https://www.smsxchange.com/scripts/sendsms.asp>
2. <https://www.smsxchange.com/scripts/htmlsendsms.asp>

UserID Your UserID
Password Your Password
phone This is the handphone number you wish to send the SMS to.
Sms This parameter is used for sending of 5 formats.

1. Normal text messages
This is the sms message (<160 characters) to be sent out.

2. Nokia Ringtones
Put the RTTTL code here (more details below)

3. Siemens Ringtones
HEX code of a MIDI song.

4. Nokia VCARD (Business Card)

5. Nokia VCAL (Calendar Event)

For Nokia Picture messages, the sms parameter is the TEXT message for the picture.

Leave this blank if sending Nokia Operator Logo or Group Icon.

A SMS message may consist of up to 160 characters belonging to the following set:

- A...Z a...z 0...9
- äöü ÄÖÜ àùò ìéé šçŃñ £\$@
- /?!"#%&'()*+,-;:<=>.
- Blank space

The meta characters \n (line feed) and \r (carriage return)

Due to restrictions in the CGI protocol format, the following special characters must

be encoded in order, not to collide with reserved CGI characters:

Character... ..must be encoded as...

- & as %26
- + as %2B
- % as %25
- # as %23
- Blank Space as %20
- = as %3D

Special Effects

(note these work only on certain phones)

For flash messages, add a prefix '\'. For blinking text sequences must start (and optionally end) with '\b'.

e.g.

This is a **\b**blinking**\b** message.

These work only for certain networks and phones.

For Chinese, you must first convert to UCS-2 format or Hex byte code for the chinese character.

E.g. The character 天 is equivalent to 4E09.

You can download our convertor to help in conversion. –

[http://www.smsxchange.com /account/uniconv.zip](http://www.smsxchange.com/account/uniconv.zip) <- Download

For Ringtones, put in the tune of the song in RTTTL format as specified below:

Ringling Tones Text Transfer Language (RTTTL). See Appendix A for full RTTTL format specifications.

Basically, RTTTL provides the functionality of Nokia's format.

A typical song takes the form of:

name:d=x,o=x,b=x:[D]N[O],[D]N[O]...

Where [bracketed] items are optional and:

name is a song name of up to ten characters

d is the default duration for a note

o is the default octave for a note

b is the speed of the song, in beats per minutes

D is the 1/duration of the current note (1/1 = Full note, 1/4 = Quarter note...)

N is the note (C, C#, D...)

O is the octave of the current note.

So a simple tune may be

eg1:

tune:d=4,o=6,b=100:c,d,e,c#,d#

Siemens Ringtones

To transmit Siemens ringtones, you will need to have the song in Midi format (.mid) file.

Note, not all networks support Siemens ringtones, In Singapore, only Singtel support Siemens ringtones.

The midi song must be a 1-track MIDI tune encoded for ringtone use.

To convert the MIDI file to HEX code, the method is similar to the conversion of GIF to HEX (see later)

Converting a MIDI file to Hexadecimal Format

This section illustrates how to generate the value of the SMS parameter from an existing MIDI file

3.1.1 Visual Basic

```

Dim s As String
Dim hx As String
Open "c:mysong.mid" For Binary Access Read As 1
hx = ""
While (Not EOF(1))
c = Input$(1, 1)
If (c <> "") Then
s = Hex(Asc(c))
If (Len(s) = 1) Then
hx = hx + "0" + s
Else
hx = hx + s
End If
end if
Wend
Debug.Print "The hex-encoded MIDI file is: " + hx

```

3.1.2 Perl 5

```

open(F, "mysong.mid") || die $!;
binmode(F);
$s = $hx = "";
while (read(F, $s, 1) > 0) {
$hx .= sprintf("%02X", ord($s));
}
close F;
print "The hex-encoded MIDI file is: $hx\n";

```

3.1.3 UNIX Command Pipe

```

od -v -t x1 mysong.mid | \
sed -e 's/^.....//' | \
tr 'a-f' 'A-F' | \
tr -dc '0-9A-F'

```

Nokia VCARD New

syntax e.g.

```

BEGIN:VCARD
VERSION:2.1
N:Smith;Mike
TEL;PREF:+55512345
END:VCARD

```

Nokia VCAL New

syntax e.g.

```

BEGIN:VCALENDAR
VERSION:1.0
BEGIN:VEVENT
DESCRIPTION:Steering Group meeting in Portal
DTSTART:20000906T100000
DTEND:20000906T120000
END:VEVENT
END:VCALENDAR

```

Unicode 0= English
 1 = Non-English Unicode

PIC

This parameter contains the GIF image to be transmitted. Images should be in GIF87 or GIF89a format and non-interlaced. Although the Nokia Picture Messaging Standard allows a maximum image size of 255 x 255 pixels, current handsets only support operator logos and group icons up to 72 (width) x 14 (height) pixels, as well as picture messaging images up to 72 x 28 pixels. This limitation applies to current Ericsson phones as well.

This parameter can contain the following formats:

1. Gif Format (1-bit non-interlaced)
2. BMP monochrome format
3. NLM (Nokia logo manager format)
4. NOL (Nokia Operator Logo format) *

For formats 1,2,3, the files must be converted to HEX format (see below for how to do the encoding)

**Samples: (gif)**

```
47494638396148000E00800000FFFFFF0000002C0000000048000
E0000029F4C7066B8CBF89E622D590B6F933ACF7F4851D5559
4A8251CA52AD7D88624BB82191B739B7B3ABBFCE2996CB1
4FCD2834A1803D62B085F3E88A4FC0D23A4BEA50510C89DA
C4E6B6DA2CD495FB7ACC6229D919A6A64B34DBF53DACC
AA5EA8EF50F18F8E720586878C847C703B881D5B6F3082129
D3569958473338E8B5E928D9C3F739E998F74318A95273430AF
A7342EA85342146098B7A0B3519F21ACB5000003B
```

Samples: (bmp)

```
424DE60000000000000003E00000028000000480000000E0000001
00010000000000A800000000000000000000000000000000000000
0000000FFFFFF002871BA656555B38D24000000287CAB255D452
91D24000000287B92E6DC54AF6D24000000287CBB25656DB39
D24000000287FFFE7FFFFFFFD240000002844CA6442489505240
00002844CA6442489505240000002844CA6442489505240000002
844CA6442489505240000002844CA6442489505240000002844CA
6442489505240000002844CA6442489505240000002844CA644248
9505240000002844CA644248950524000000
```

Samples: (nlm)

```
4E4C4D20010000480E01D7BB359BBDB76AFADBD7BB359BB
DB76AFADBD7BB359BBDB76AFADBD7BB359BBDB76AFA
DBD7BB359BBDB76AFADBD7BB359BBDB76AFADBD7BB3
59BBDB76AFADBD7BB359BBDB76AFADBD7BB359BBDB76
AFADBD780001800000002DBD78344DA9A924C62DBD7846D
1923AB5092DBD78354DAA2BAD6E2DBD78E459A9AAA4C72
DB
```

For NOL format you may use the file directly by reading the file and passing it to the PIC parameter. e.g.

```
NOL H ;
1101011110111011001101011001101110111101101101110110101
011111010110110111101011110110110011010110011011101111
0110110111011010101111101011011011110101111011101100110
1011001101110111101101101110110101011111010110110111101
0111101110110011010110011011101111011011011101101010111
1101011011011110101111011101100110101100110111011110110
1101110110101011111010110110111101011110111011001101011
0011011101111011011011101101010111110101101101111010111
1011101100110101100110111011110110110111011010101111101
0110110111101011110111011001101011001101110111101101101
1101101010111110101101101111010111101110110011010110011
0111011110110110111011010101111101011011011110101111000
000000000000000110000000000000000000000000000000000000010110
1101111010111100000110100010011011010100110101001001001
0011000110001011011011110101111000010001101101000110010
0100011101010110101000010010010110110111101011110000011
0101010011011010101000101011101011010110111000101101101
1110101111000111001000101100110101001101010101010010011
000111001011011011
```

This parameter is used only for sending operator logos / group icons / picture message

Note: Not all networks are able to support logo/group icons/siemens logos and EMS.

You can download a GIF convertor to help in converting .gif to Text format. –

<http://www.smsxchange.com/account/gconvert10.exe> <- Download

Each byte in the GIF image file is represented by two hex digits in ASCII format in the IMG parameter. All hex digits must be in uppercase; no blanks or other characters outside the range of

"0".."9", "A".."F" are allowed. As the common header of a GIF file consists of the bytes x47 x49 x46 x38 (in hexadecimal); therefore, the IMG parameters should start with

IMG=47494638...

For operator logos and group icons, the GIF image size is 72(width) x 14(height) pixels.

For picture messages, the GIF image size is 72(width) x 28(height) pixels.

For EMS, the size is in either 32x32, 16x16 or 8x8 pixels

For Siemens Logos, the range is anything from 72x14 to 101x45 pixels

To convert gifs to HEX, code use the following

Converting a GIF Image to Hexadecimal Format

This section illustrates how to generate the value of the PIC parameter from an existing GIF image file.

3.1.1 Visual Basic

```
Dim s As String
Dim hx As String
Open "c:\myimage.gif" For Binary Access Read As 1
hx = ""
While (Not EOF(1))
c = Input$(1, 1)
If (c <> "") Then
s = Hex(Asc(c))
If (Len(s) = 1) Then
hx = hx + "0" + s
Else
hx = hx + s
End If
end if
Wend
Debug.Print "The hex-encoded GIF file is: " + hx
```

3.1.2 Perl 5

```
open(F, "myimage.gif") || die $!;
binmode(F);
$s = $hx = "";
while (read(F, $s, 1) > 0) {
$hx .= sprintf("%02X", ord($s));
}
close F;
print "The hex-encoded GIF file is: $hx\n";
```

3.1.3 UNIX Command Pipe

```
od -v -t x1 myimage.gif | \
sed -e 's/^.....//' | \
tr 'a-f' 'A-F' | \
tr -dc '0-9A-F'
```

Model 0= Nokia
(Nokia phones)

1= Ericsson
(Ericsson phone models ; R520 ,/mc (*) (**), T29 (*)(**), Ericsson T39(**)

(*) Firmware release R2 and later only. Firmware R1 in these phones does not support EMS. The phone's firmware version is listed on the package in which the phone was purchased.

(**) Ericsson logos can only handle logos up to 72x14 pixels in size.

2= Siemens
(Siemens C45; S45; SL42; ME45)

3= Motorola
T190,T191 and supported models

4= Sagem

5= EMS-supported e.g. Alcatel 511, Ericsson T39, T68, T68i, Samsung

6=Alcatel Pictures / MSEQ Poly Ringtones

7= TDMA Smart Message

8= Concatenated EMS

9= WBXML (WAP-OTA)

10= Animated Screensaver (WAP-Download)

(used only when sending logos / picture messages or Siemens ringtones)

OP

Operator Code.

Please refer Appendix B for the full list of operator codes. This parameter is used only for sending operator logos.

E.g.

25F510 - SingTel Mobile 900

25F520 - SingTel Mobile 1800

25F530 - M1 Mobile 900

25F550 - Starhub Mobile 1800

ORIG (NEW) The Sender's Number -- Format: 11 Alphanumeric characters (no space)

Setting of sender's ID comes without warranty and is subject to change in Network routings.

If this parameter is not set, SMSXchange will assume the Sender ID as set in the Account Config.

RequestID 0 (default)

(New) 1 – instead of returning a '01' success code, it returns the MsgID of the message in the queue

GW 0 (default Automatic Gateway)

(New) 1-9 access up to 9 providers programmatically.

Please check coverage / cost for coverage and cost of each provider.

Max 1 (default)

1-9

Used only when sending an animated screensaver / WAP download (Model=10). This number indicates how many times the WAP page can be accessed after which the animated graphic / wap download will no longer exist

Error Codes

After calling the script, we return a numerical code with the following meanings:

- 01 Message Successfully Sent
- 02 No Such User
- 03 Password is wrong
- 04 Domain Name of server is wrong. Set this parameter only if sending the SMS using the ASP/HTML example script.
- 05 Message not sent. Undocumented error.
- 06 Phone Number is empty.
- 07 SMS parameter missing. No message to send.
- 09 Insufficient SMS Credits.

Sending Sagem Ringtone

<http://www.smsxchange.com/scripts/sendsms.asp?UserID=xxx&Password=1234&phone=6591234567&PIC=&OP=&SMS=YMCA%3Ad%3D4%2Co%3D5%2Cb%3D160%3A8c%236%2C8a%23%2C2p%2C8a%23%2C8g%23%2C8f%23%2C8g%23%2C8a%23%2Cc%236%2C8a%23%2Cc%236%2C8d%236%2C8a%23%2C2p%2C8a%23%2C8g%23%2C8f%23%2C8g%23%2C8a%23%2Cc%236%2C8a%23%2Cc%236%2C8d%236%2C8b%2C2p%2C8b%2C8a%23%2C8g%23%2C8a%23%2C8b%2Cd%236%2C8f%236%2Cd%236%2Cf.6%2Cd%23.6%2Cc%23.6%2Cb.%2Ca%23%2Cg&profileNM=&Model=4>

Sending Motorola Ringtone

<http://www.smsxchange.com/scripts/sendsms.asp?UserID=xxx&Password=1234&phone=6591234567&PIC=&OP=&SMS=YMCA%3Ad%3D4%2Co%3D5%2Cb%3D160%3A8c%236%2C8a%23%2C2p%2C8a%23%2C8g%23%2C8f%23%2C8g%23%2C8a%23%2Cc%236%2C8a%23%2Cc%236%2C8d%236%2C8a%23%2C2p%2C8a%23%2C8g%23%2C8f%23%2C8g%23%2C8a%23%2Cc%236%2C8a%23%2Cc%236%2C8d%236%2C8b%2C2p%2C8b%2C8a%23%2C8g%23%2C8a%23%2C8b%2Cd%236%2C8f%236%2Cd%236%2Cf.6%2Cd%23.6%2Cc%23.6%2Cb.%2Ca%23%2Cg&profileNM=&Model=3>

Sending Siemens Ringtone

<http://www.smsxchange.com/scripts/sendsms.asp?UserID=xxx&Password=1234&phone=6591234567&PIC=&OP=&SMS=4D54686400000060001000200C04D54726B0000008300FF011242792045726963204265726E61746368657A00FF0223436F7079726967687420A920323030312062792045726963204265726E61746368657A00FF0213416C6C2052696768747320526573657276656400FF012047656E657261746564206279204E6F7465576F7274687920436F6D706F73657200FF510305161500FF2F004D54726B000000D700FF21010000FF0305537461666600B0077F00B00A400090466E5E9046000290416E81209041002090436E5E90430002903E6E5E903E0002903F6E5E903F000290406E5E9040000290416E5E9041000290436E5E90430002903E6E8120903E002090416E5E90410002903F6E8250903F003090436E5E9043000290486E812090480020904A6E5E904A0002904B6E5E904B000290486E5E90480002904A6E5E904A000290456E5E9045000290486E5E90480002904A6E5E904A000290496E5E9049000290486E5E9048000290466E825090460000FF2F00&profileNM=&Model=2>

Sending Nokia Ringtone (TDMA Networks)

<http://www.smsxchange.com/scripts/sendsms.asp?UserID=xxx&Password=1234&phone=6591234567&PIC=&OP=&SMS=YMCA%3Ad%3D4%2Co%3D5%2Cb%3D160%3A8c%236%2C8a%23%2C2p%2C8a%23%2C8g%23%2C8f%23%2C8g%23%2C8a%23%2Cc%236%2C8a%23%2Cc%236%2C8d%236%2C8a%23%2C2p%2C8a%23%2C8g%23%2C8f%23%2C8g%23%2C8a%23%2Cc%236%2C8a%23%2Cc%236%2C8d%236%2C8b%2C2p%2C8b%2C8a%23%2C8g%23%2C8a%23%2C8b%2Cd%236%2C8f%236%2Cd%236%2Cf.6%2Cd%23.6%2Cc%23.6%2Cb.%2Ca%23%2Cg&profileNM=&Model=7>

Sending Animated Screensavers / WAP Downloads

[30 Raffles Place #23-00 Caltex House
Singapore 048622](http://www.smsxchange.com/scripts/sendsms.asp?UserID=xxxx&Password=1234&phone=6591234567&OP=&SMS=&PIC=47494638396148001C00F7FF00E7A8C5D8DAD710ACEBB90BBA56D0F65CD2F7C3C5C2B3EBFC89058AF5FCFF25B7EEAD0AAE8D058D4ECCF5CBF2FDB10AB2DDCCD2CBCDCA16AFECE1BBCA9D089E3DC3F246C8F34CCBF5D3F4FDFCFEFFF5AA09ACDAD6D6BEC0BD44C7F328B9EF4ACAF42BBAEFBCEEF5D3F4FDFCFEFFF597C037C2EBBEF5CD3F7850486A409A634BFF0800481A809AA3FC4F214AEEBEDFAFE7502755ED4F73EC4F2E4F8FEEB93BC37C0F1F471A553CEF6E8F9FE4FCDF5AE0AB0A108A2E3B4C853CEF5A208A4D9F5FD9C079D9E08A0E4AFC554CEF6FAFEFF59D2F7BCBEBB18B0EC36C0F1940694C00CC154D0F798079A48C9F412ADEBD6D8D5F8FDFFF0FBFEE7A4C042C6F3DFF6FE9A079B30BCF0A408A420B4ED92069333BEF099089ADFC2CE5AD1F6B20AB3BB0BBC48C9F3DBD2D51AB2ED5CD4F79507969006919206922AB9EF1AB1ECBE0CBFAC0AAD960797B40BB59A079A97079896079722B6ED1EB3EDDEC6D042C5F2D9D9D721B5EEA008A1B60BB7910692A809A8B60CB8C6C8C5A90AABA608A7E99ABD8705882EBCEFD3D5D2A208A2CED0CDAF0AB10FACEA8A058B8F06909B089C3AC2F130BDEFAD09AEDCD0D3810381C30DC5FFF5FFFC10DC3C20DC461D6F8C30DC4BC0CBE60D5F8BE0CC0BD0CBFC00DC2C00CC2B50BB75FD5F8B70BB9B60BB8BB0CBD61D5F8BA0CBCBF0CC1BF0DC1B30BB5B40BB6C20DC3B20BB4FEFFFF5ED4F8BD0CBE5FD4F8BC0CBD5AD2F75BD3F7B90CBB5DD3F7BE0DC0AA09ABB50BB6BB0CBCB70BB85BD2F7B30BB417B0EC58D1F65DD4F860D6F858D1F71FB4ED5ED5F813AEB59D1F752CDF5AD0Aafb20AB4B70CB959D1F63BC2F2B30AB549CAF43AC1F232BDF0AA0AABAB09AD56CFF65AD3F7C0C2BF54CFF638C1F14DCBF5C4F0FCF9FEFFF3FCFED4D6D358D0F651CEF5C10DC25AD2F6BF0DC023B6EED1D3D0D5D7D4C8CAC7D0D2CFF375B1700271B60AB859D0F622B5EDAE09AF5BD2F6BF0CC07E037FBD0DBF22B5EEBD0DBE5FD6F858D0F7B50AB656CFF551CEF6770277A80AA982048360D4F855D0F6910591910592D9DBD800A4E8C40DC662D6F8000000FFD400FFFFFF21FF0B4E45545343415045322E30030100000021F904053200FF002C0000000048001C000008FF00FB091C48B0A0C183FD20253CA81052C3850215167448D121C28B18314AB448B0A1F7881207729C98B1A4C9900937A25CB81222C29626634634389226C98C306596CCA951644C9E3A5F067509B3A245A0436F8A4459D4E552A31B93EE0409B5AA4FA655293A956A33E551A8293B42347A11E9D0901541865D3BD3634D865CE13EFDDA71E543B665E32AA5FA55AB569F2C4FEA05BC74A6D7BE47094F3D6BF5F048B0699DA2252B3628CFBF59FD3EAEEB38F2D69F2F314FD6ACB6745DC8498B92FDB85AE5DDB269CD0A3D1D3B6CE4BF865B62359C9A36C7D18871BFAD99382EF0B9941F37365D992BF0CCBFA3AE15FEF6B3E5E8D0472BF62C5A2563D9B7938B32F7CA17AD4EAC99698AC75DBE7C71999E43B3C7FBF0AE55E1834F52E7CD1BB2DFFC731E45F6CE60118A07BCF85948F5301010021F904053200FF002C120000003600140000089400FF091C48B0A0C1830807F65BB85020A48790124A9C38B1A1C388FFFA0D8448B123458D1B0B820CE9B1A44882184F92346972E4BF94065DB26439126641482E21DA9C191365C6830F0DEEE4A95261C288298712250852A345A02F2F065D7AD0A9D38A4AA9AA9489B01F52AD154B82CC0AF62759A367CBAEEC1A55AD44AF1FD3BAED0877EE52AE7679E2CC4B142F5F937B0706040021F904053200FF002C0A0000003E0018000008B100FF091C48B0A0C18308130A84C490A1C07E10FB299C48B1E240870F25FE833430A2C58F2039762C287224C893094BFED3489260BF8618519E54C9D2A0CA8B326596AC59F0A5CD9C28696E3C08B125D0994689AE5C08F36852A31C631A94C8D3E9429C07A3469D08A9AA5389377F0EA5D875A9D58E10C312548B50A4D7AF5CCDC67D7BD622DDAB77EBA6CCBB91AF5EA065FF0A662BF8ACCF27A09D7550CF270618E7E1157741859F2DCCA9627629619100021F904053200FF002C010001002A00170000086F0021091CF8AFA0C18308132A5C781012C387101F3A8C48B1E2C48A18195ECCC8B1E140811D438A1C491222A47E095196D46850E53F972B59C28C79B01F4A970367D2748872E3469A06090255C87368C49F469386D4A9F4A5CD7F489B0A55C8B4E94BA8566BF6CCDA126A54A90903020021F904053200FF002C010001002300130000085F00FB091CF8AFA0C18308132A44D86FA1C387091B429CE850E2C1810229567C685123438C1DFF85C4E871A3C290250D82BCA8B11FA4942421A24C49B36642482F5FDAE4F8EFE5CC9D2A330265D873284FA3486BEA4C6A10A74FA617851E0C080021F904053200FF002C120000003600140000089400FF091C48B0A0C1830807F65BB85020A48790124A9C38B1A1C388FFFA0D8448B123458D1B0B820CE9B1A44882184F92346972E4BF94065DB26439126641482E21DA9C191365C6830F0DEEE4A95261C288298712250852A345A02F2F065D7AD0A9D38A4AA9AA9489B01F52AD154B82CC0AF62759A367CBAEEC1A55AD44AF1FD3BAED0877EE52AE7679E2CC4</p></div><div data-bbox=)


```
B142F5F937B0706040021F904053200FF002C0A0000003E00140000089700FF091C48B0
A0C18308130A84C490A1C07E10FB299C48B1E240870F25FE833430A2C58F2039762C287
224C893094BFED3489260BF8618519E54C9D2A0CA8B326596AC59F0A5CD9C28696E3C08
B125D0994689AE5C08F3A845911C631A94C8D3E9C7A8512742AA6AB52254AF54BB227DF
A506CC8A5143972355B712D4EB76C116E4D0B372ED0B976CDDECC2BD627DFAE7BFF3AF5
2B30200021F904053200FF002C01000100060006000008150021091CF8AFE03F48060F2
644689061C181030302003B&profileNM=&Model=10&Max=3&GW=
```

Sample Animated GIF



The **Max** parameter indicates how many times the WAP URL can be accessed after which the graphic will cease to exist.

Sending Alcatel Picture

```
http://www.smsxchange.com/scripts/sendsms.asp?UserID=xxxx&Password=1234
&phone=6591234567&OP=&SMS=&PIC=424D2A0200000000000003E000000280000006000
0000290000000100010000000000000000000000000000000000000000000000000000
00000FFFFFFF00FFFF01FFAC00007FF00FFFFFFFFFE07FE0000001FF806FFFFFFFFC0F5300
FFE00E7E07FFFFFFFFC1F180AAFFE063E07FFFFFFFF81E3057FFF921F03FFFFFFFF81E30E
AAFFFC31F03FFFFFFFF81F3057FFFC33E03FFFFFFFF80FF0EAAFFFC3FE07FFFFFFFFC07F0
57FFFC3F807FFFFFFFFE01F0EAAFFFC3F00EFFFFFFFFE007057FFFC3AC1DFFFFFFFF003
0EAAFFFC2003AFFFFFFFFFAC3057FFFC00075FFFFFFFFFE030EAAFFFC001EBFFFFFFFFD78
3057FFFC007D5FFFFFFFFEABF30EAAFFFC03FABFFFFFFFF5557F057FFFE03D5555555EAAA
AF0EAAFFFC01EABFFBFFD5555505555500F57FD55FEAAAAB0FF003FC007AFEAAAFF55
5550C00001E0035FD5555555555550000C003BFAAAA5FFD5550C00000C103FFD555AAF
FEAB0E00001C101FFAAA555555555555007FC181FF555555555555003FFFFF8181FFAAA55
5555F00FFFE0181FF5555555555557C608020301FF55555555555580800000781FF5555A
AAAAAE1004010781FFAAA555555557C608020301FF55555555555580800000781FF5555A
55555555EC0A1A0003DFD5555555555557D5F50003BFEEAAA55555557ABEBEAAC075FFD5
5AAAAAAB57D5F5000EBFFFEAAD55555557AFABEAC01D5FFFD5AAAAAAB57D7F5FFFABFFF
EFD5555557AFABEAF55555555555555557D5F56AAABFFFFFFFFD555557ABEAEAF55555FF
FFF&profileNM=&Model=6
```

Sample Graphic



Sending Alcatel MSEQ Ringtone (Polyphonic ringtone)

```
http://www.smsxchange.com/scripts/sendsms.asp?UserID=xxxx&Password=1234
&phone=6591234567&sms=2E534551218D000000001C0000001C000000881300FF01FF9
E0101800000FFFF3B00033004480290F70B1606029EF70B160602ACF70B16060290F70B
1606029EF70B160602B0372016120290F70B1606029EF70B160602ACF70B16060290F70
B1606029EF70B160602A837201612028637201606029AF70B160602A8F70B160602A4F7
0B028637361606029AF70B160602A2F70B1606029AF70B160602A4F7171606028C37201
606029AF70B160602A4F70B160602A2F70B028C37201606029AF70B1606029EF7171606
028C37141606029AF70B160602A2F70B02823720160602A8F717160C029EF70B0280372
0160602A8F70B1606029EF70B1606029AF70B027C3714160602A8F70E16060278374296
010298373FFE011F00&PIC=&OP=&profileNM=&Model=6
```


Binary SMS are sent via Gateway 1 (GW1) . Hence cost and coverage is subject to the cost and coverage as specified for Gateway #1

Sending WAP-Configuration OTA ^{New}

Sending WAP-OTA is now possible. SMSxchange support this via a new script at:

<http://www.smsxchange.com/scripts/otasendsms.asp>

Backup

<http://www2.smsxchange.com/scripts/otasendsms.asp>

The OTA script supports the WBXML (WAP Binary eXtensible Markup Language) standard. SMSXchange does the conversion to binary formats for sending to the SMSC.

Handsets accept 2 types of browser settings, each with a different purpose:

1. Browser Settings
2. Browser Bookmarks

Parameter	Explanation
Userid	Your SMSXchange UserID
Password	Your SMSXchange Password
Phone	Destination Phone Number
SMS	<p>WBXML script</p> <p>The following example applies to Nokia phones only. For OTA settings of other phone makes, please consult the documentation as provided by individual manufacturers.</p> <p>1. Example (browser setting)</p> <pre><CHARACTERISTIC-LIST> <CHARACTERISTIC TYPE="ADDRESS"> <PARM NAME="BEARER" VALUE="GSM/CSD"/> <PARM NAME="PROXY" VALUE="165.21.42.84"/> <PARM NAME="CSD_DIALSTRING" VALUE="+6596763330"/> <PARM NAME="PPP_AUTHTYPE" VALUE="PAP"/> <PARM NAME="PPP_AUTHNAME" VALUE="6591234567"/> </CHARACTERISTIC> <CHARACTERISTIC TYPE="URL" VALUE="http://www.e-ideas.com.sg"/> <CHARACTERISTIC TYPE="NAME"> <PARM NAME="NAME" VALUE="e-Ideas"/> </CHARACTERISTIC> <CHARACTERISTIC TYPE="BOOKMARK"> <PARM NAME="NAME" VALUE="Wap"/> <PARM NAME="URL" VALUE="http://www.e-ideas.com.sg"/> </CHARACTERISTIC> </CHARACTERISTIC-LIST></pre>

	<p>2. Example (browser bookmark)</p> <pre><CHARACTERISTIC-LIST> <CHARACTERISTIC TYPE="URL" VALUE="http://wap.dk"/> <CHARACTERISTIC TYPE="NAME"> <PARM NAME="NAME" VALUE="SMSXChange"/> </CHARACTERISTIC> <CHARACTERISTIC TYPE="BOOKMARK"> <PARM NAME="NAME" VALUE="Wap Page"/> <PARM NAME="URL" VALUE="http://wap.smsxchange.com"/> </CHARACTERISTIC> </CHARACTERISTIC-LIST></pre>
OTAType	<p>This parameter takes on only 2 values; 0 or 1 . It identifies how the WBXML should be sent.</p> <p>0 (browser setting) 1 (browser bookmark)</p>

The OTA script fully supports the specification as outlined in Nokia-Ericsson OTA Specifications version 6.5

WAP-OTA settings are sent via Gateway 1 (**GW1**) . Hence cost and coverage is subject to the cost and coverage as specified for Gateway #1

**** Please note that WAP-OTA averagely takes 2-50 SMS to send. The length varies depending on the number of bookmarks that are being sent. Our SMS parameter has a maximum length of 4096 characters.**

Please consult the following for more information:

http://www.smsxchange.com/account/OTA_settings_general_6_5.pdf

Concatenated EMS^{New}

SMSXchange now supports multi-concatenated EMS. Hence you add send a sequence of text, ringtone and animations and pictures as 1 SMS.



Example of concatenated SMS viewed from a Sony-Ericsson T68i.

The EMS is transmitted using the following keywords.

SOUND <integer>	EMS Predefined Sound <integer> can take on values 0-9 There are 10 predefined sounds check the list of predefined sounds in the EMS Chart below
PREANIM <integer>	EMS Predefined Animation <integer> can take on values 0-14 There are 15 predefined sounds check the list of predefined sounds in the EMS Chart below
LARGEANIM <HEX bitmap 1><HEX bitmap 2><HEX bitmap 3><HEX bitmap 4>	Large Animation 4 frames of 16x16.
SMALLANIM <HEX bitmap 1><HEX bitmap 2><HEX bitmap 3><HEX bitmap 4>	Small Animation 4 frames of 8x8
PIC <HEX bitmap>	Picture in bmp / gif format. Size can be 72x14, 32x32, 16x16, 8x8 or any size as long can be transmitted within 1 SMS
RINGTONE <RTTTL string>	Ringtone in RTTTL format

Each EMS component is separated by the ‘|’ character.

To send a concatenated EMS, simply call our script

<http://www.smsxchange.com/scripts/sendsms.asp>

with the following parameters

Parameter	Explanation
Phone	Phone number of destination phone
Userid	SMSXchange Userid
Password	SMSXchange Password
SMS	EMS sequence as defined above: e.g. PREANIM1 PIC424DBE0000000000000003E0000002800000020000000 200000000100010000000000AC000000000000000000000000000000 00000000000000FFFFFF00FFFC7FFFFFF523E1FFF1E3E1FFFAC1E0FF FAC1E0FF0000607C0000307AC0001030000000340000003AC0000010 00000010000000103AC000192000000C0080000E0180000E0300000E0 600000E0440000E03800009000000090000001C6000001C4000001FE00 0000FF000006FFC0000AFF00018FFFC007FFFFFF92FFFFFFFFFFFF Thi s_is_a_test PREANIM2 SOUND2 of_concatenated_EMS SOUND3 RIN GTONEAxelF:d=4,o=5,b=125:32p,8g,8p,16a#.,8p,16g,16p,16g,8c6,8g, 8f,8g,8p,16d.6,8p,16g,16p,16g,8d#6,8d6,8a#,8g,8d6,8g6,16g,16f,16p,16 f,8d,8a#,2g,p,16f6,8d6,8c6,8a#,g,8a#.,16g,16p,16g,8c6,8g,8f,g,8d.6,16g, 16p,16g,8d#6,8d6,8a#,8g,8d6,8g6,16g,16f,16p,16f,8d,8a#,2g
ORIG	Sender Number (Numeric Only)
Model	8 This value must be 8 to tell the gateway that it is a concatenated EMS

EMS Predefined Content Chart

A. Predefined Animations (PREANIM)

Animation number	Description	Smiley small font	Smiley big font
0	I am ironic, flirty	☺	☺
1	I am glad	☺	☺
2	I am sceptic	☹	☹
3	I am sad	☹	☹
4	WOW!	☺	☺
5	I am crying	☹	☹
6	I am winking	☺	☺
7	I am laughing	☺	☺
8	I am different	☺	☺
9	In love / Kissing	☺	☺
10	I am confused	☹	☹
11	Tongue hanging out	☺	☺
12	I am angry	☹	☹
13	Wearing glasses	☺	☺
14	Devil	☹	☹

B. Predefineds Sounds (SOUND)

Sound Integer	Sound Name
0	Chimes High
1	Chimes Low
2	Ding
3	Tada
4	Notify
5	Drum
6	Claps
7	Fanfare
8	ChordHigh
9	ChordLow

Status Scripts^{New}

The following scripts have been added so that you can programmatically retrieve the status of your messages and account to use in your applications.

1. Retrieving status of Message

<http://www.smsxchange.com/scripts/Msgstatus.asp>

- returns the live status of the Message

MsgID (compulsory)	MsgID of the message. This can be used in conjunction to sendsms.asp and specifying the RequestID =1 parameter to return the MsgID of the message sent
UserID (compulsory)	Userid of your account
Password (compulsory)	Password of your account

2. Retrieving Account Balance

<http://www.smsxchange.com/scripts/getbalance.asp>

- returns the account balance of your account

UserID (compulsory)	Userid of your account
Password (compulsory)	Password of your account

Chart For Parameter Inclusion

X = Include this parameter
 - = Ignore this parameter
 blank = use '' (nullstring) as the value

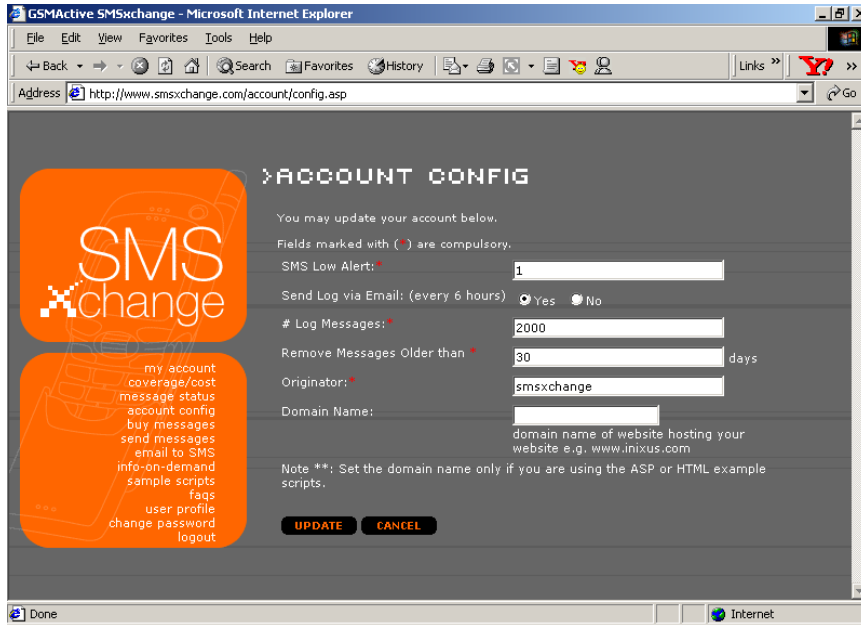
Type \ Parameter	UserID	Password	Phone	SMS	PIC	OP	Unicode	profileNM	Model
Text	x	x	x	x	-	-	-	-	-
Unicode	x	x	x	x	-	-	x	-	-
Flash / Blinking	x	x	x	x	-	-	-	-	-
Operator Logos (Nokia)	x	x	x	x	x	x	-	-	-
Group Icons	x	x	x	x	x	blank	-	-	-
Picture message	x	x	x	x	x	blank	-	-	-
Nokia Ringtones	x	x	x	RTTTL	blank	blank	-	-	-
Profile Downloads	x	x	x	Optional RTTTL Code	x	blank	-	10 char name	-
Nokia VCAL	x	x	x	VCAL	-	-	-	-	-
Nokia VCARD	x	x	x	VCARD	-	-	-	-	-
Ericsson Logos	x	x	x	x	x	blank	-	-	1
Siemens Logos	x	x	x	Blank	x	blank	-	-	2
Siemens Ringtones	x	x	x	HEX encoding of MIDI file	blank	blank	-	-	2
Motorola Ringtones	x	x	x	RTTTL code	blank	blank	-	-	3
Sagem Ringtones	x	x	x	RTTTL code	blank	blank	-	-	4
EMS Logos	x	x	x	x	blank	blank	-	-	5
Concatenated EMS	x	x	x	x	-	-	-	-	8
WAP OTA	x	x	x	WBXML	-	-	-	-	9

2.2 htmlSendSMS.asp

This script allows sending of SMS from a HTML page.

Security Warning:

As HTML is not secure, you should NOT put the password parameter into your web page. To work around this, use of this script must be accompanied with a Domain Name setting in the account config



Note **:

SMS messages sent out using this script require the Domain Name Configuration Value to be set for security reason.

This will ensure that SMSXchange deducts SMS messages from your account only if the request was sent from this domain server referer.

Sending SMS using Email

Sending SMS using this method is a snap. There are 2 ways to send out SMS

Method I: Sending SMS to Single User

All you have to do is send an email with the following format to sms@smsxchange.com.

To:	sms@smsxchange.com
Subject:	+659xxxxxxx@userid:password
Body:	SMS Message less than 160 characters. Excess characters will be truncated.
Encoding:	text/plain; 7-bits

Method II: Sending Same Message to Multiple Users

To:	userid.password@smsxchange.com
Subject:	message to be sent to all the recipients
Body:	+659xxxxxxx +659xxxxxxx +659xxxxxxx with each number on a different line, i.e. separated with CrLf (Carriage Return Line Feed), i.e. pressing Enter key
Encoding:	text/plain; 7-bits

Info-On-Demand (2 Way Messaging)

For 2 way messaging , SMSXchange provides a common number for users to SMS to:

Service Hosting via +65 97500520

- You must have access to a web server and CGI programming experience
- We provide one SMS access number which is shared by our customers
- You can register one or several keywords on our web site
- Each keyword is associated with a CGI script on your web server
- If a mobile user sends a message beginning with one of your keywords to the number +65 97500520, the corresponding CGI script will be called by our server.
- Your script's response is sent back to the mobile user

Everytime a SMS message is received by our centre number +6597500520, the server will pass 2 parameters to your script via HTTP.

phone	The message sender's Handphone number so that you can reply him with a message.
sms	The SMS message he has sent to +6597500520.

The call will be made in the following format

<your url>?phone=+659xxxxxx&sms=SMS+Message

We provide sample codes to implement your CGI in JSP, ASP and CFML. More samples will be developed soon. To download sample scripts, click [here](#).

If you wish to return back a SMS to the sender, simply get your script to output the text string in the following format:

[**handphone** | **message**] e.g. [+6591234567 | this is the message to be sent]

where **handphone** = handphone number and **message** is the message you wish to send.
Handphone number +6591234567 will receive a SMS message "this is the message to be sent"

Appendix A - RTTTL Format

```
<ringing-tones-text-transfer-language> :=  
<name> <sep> [<defaults>] <sep> <note-command>+  
<name> := <char>+ ; maximum name length 10 characters  
<sep> := ":"  
<defaults> :=  
<def-note-duration> |  
<def-note-scale> |  
<def-beats>  
<def-note-duration> := "d=" <duration>  
<def-note-scale> := "o=" <scale>  
<def-beats> := "b=" <beats-per-minute>  
<beats-per-minute> := 25,28,...,900 ; decimal value  
; If not specified, defaults are  
;  
; 4 = duration  
; 6 = scale  
; 63 = beats-per-minute
```

```
<note-command> :=  
[<duration>] <note> [<scale>] [<special-duration>]  
<delimiter>
```

```
<duration> :=  
"1" | ; Full 1/1 note  
"2" | ; 1/2 note  
"4" | ; 1/4 note  
"8" | ; 1/8 note  
"16" | ; 1/16 note  
"32" | ; 1/32 note
```

```
<note> :=  
"P" | ; pause  
"C" |  
"C#" |  
"D" |  
"D#" |  
"E" |  
"F" |  
"F#" |  
"G" |  
"G#" |  
"A" |  
"A#" |  
"H"
```

```
<scale> :=  
"5" | ; Note A is 440Hz
```

GSHACTIVE

```
"6" | ; Note A is 880Hz  
"7" | ; Note A is 1.76 kHz  
"8" ; Note A is 3.52 kHz  
<special-duration> :=  
"." ; Dotted note  
<delimiter> := ", "  
; End of specification
```

Appendix B - Operator Codes

This is a list of GSM mobile operator codes worldwide as of January 2002.

72F610 = Albania, Albanian Mobile Comms
06F310 = Algeria, Algerian Mobile Network
12F330 = Andorra, S.T.A. MobilAnd
82F310 = Armenia, ArmenTel
05F510 = Australia, Telstra Mobile Comms
05F520 = Australia, Cable + Wireless Optus
05F530 = Australia, Vodafone
32F210 = Austria, MobilKom Austria A1
32F230 = Austria, max.mobil.Telekoms Service
32F250 = Austria, Connect Austria One
32F270 = Austria, Telering
04F010 = Azerbaijan, Azercell Telekom B.M.
04F020 = Azerbaijan, J.V.Bakcell GSM 2000
24F610 = Bahrain, Batelco
74F010 = Bangladesh, Grameen Phone
74F091 = Bangladesh, Sheba Telecom
02F610 = Belgium, Belgacom Mobile Proximus
02F601 = Belgium, Mobistar
02F602 = Belgium, Orange
12F810 = Bosnia Herzegovina, Cronet
12F891 = Bosnia Herzegovina, PTT Bosnia
12F809 = Bosnia Herzegovina, PE PTT BIH
56F210 = Botswana, Mascom Wireless
25F810 = Brunei Darussalam, Jabatan Telekom
25F811 = Brunei Darussalam, DST Communications
82F410 = Bulgaria, MobilTel AD
54F610 = Cambodia, CamGSM
54F620 = Cambodia, Cambodia Samart Comms
26F410 = Cameroon, PTT Cameroon Cellnet
03F273 = Canada, Microcell Connexions Inc
26F510 = Cape Verde, Cabo Verde Telecom
37F010 = Chile, Entel Telefonía Movil
37F001 = Chile, Entel PCS Telecom.
64F000 = China, China Telecom GSM
64F010 = China, China Unicom GSM
64F020 = China, Liaoning PPTA
16F210 = Cote d'Ivoire, Comstar Cellular Network
16F220 = Cote d'Ivoire, Telecel
16F230 = Cote d'Ivoire, S.I.M Ivoiris
16F250 = Cote d'Ivoire, Loteny Telecom Telecel
12F910 = Croatia, Croatian Telecoms Cronet
82F010 = Cyprus, Cyprus Telecoms Authority
32F010 = Czech Republic, RadioMobil
32F020 = Czech Republic, EuroTel Praha
32F030 = Czech Republic, SPT Telecom
32F810 = Denmark, Tele-Danmark Mobil
32F820 = Denmark, Sonofon
32F802 = Denmark, Telia Denmark
32F803 = Denmark, Mobilix
06F210 = Egypt, MobiNil
06F220 = Egypt, Misrfone Telecom. Click
42F810 = Estonia, Estonian Mobile Telephone
42F820 = Estonia, Radiolinja Eesti
42F830 = Estonia, Q GSM
36F610 = Ethiopia, Ethiopian Telecoms Auth.
45F210 = Fiji, Vodafone Fiji

42F430 = Finland, Telia Finland
42F450 = Finland, Radiolinja
42F450 = Finland, Alands Mobiltelefon
42F490 = Finland, Finnet Group
42F419 = Finland, Sonera Corporation
02F810 = France, France Telecom Itineris
02F801 = France, SFR
02F802 = France, Bouygues Telecom
45F702 = French Polynesia, Tikiphone
43F010 = French West Indies, France Caraibe Ameris
82F210 = Georgia, Geocell Limited
82F220 = Georgia, Magti GSM
62F210 = Germany, D1 DeTe Mobil
62F220 = Germany, D2 Mannesmann Mobilfunk
62F230 = Germany, E-Plus Mobilfunk
62F270 = Germany, Viag Interkom
26F010 = Ghana, ScanCom
62F610 = Gibraltar, Gibraltar Telecoms Gibtel
02F210 = Greece, Cosmote
02F250 = Greece, Panafon
02F201 = Greece, Telestet
92F010 = Greenland, Tele Greenland
16F120 = Guinea, Sotelgui Lagui
54F400 = Hong Kong, Hong Kong Telecom CSL
54F440 = Hong Kong, Hutchison Telecom
54F460 = Hong Kong, SmarTone Mobile Comms
54F401 = Hong Kong, New World PCS
54F421 = Hong Kong, Peoples Telephone
54F461 = Hong Kong, Mandarin Com. Sunday
54F481 = Hong Kong, Pacific Link
54F422 = Hong Kong, P Plus Comm
12F610 = Hungary, Pannon GSM
12F607 = Hungary, V.R.A.M. Telecommunication Co. Ltd.
12F603 = Hungary, Westel 900 GSM Mobile
72F410 = Iceland, Iceland Telecom Siminn
72F420 = Iceland, TAL hf
04F470 = India, TATA Cellular
04F401 = India, Bharti Cellular Telecom Airtel
04F411 = India, Sterling Cellular Essar
04F421 = India, Escotel Mobile Comms
04F441 = India, Modi Telstra Modicom
04F451 = India, Aircel Digilink Essar Cellph.
04F402 = India, Hutchison Max Touch
04F412 = India, BPL Mobile
04F472 = India, BPL USWest Cellular
04F403 = India, Usha Martin Tel. Command
04F413 = India, Mobilenet
04F404 = India, SkyCell Communications
04F414 = India, RPG MAA
04F424 = India, Srinivas Cellcom
15F010 = Indonesia, PT. Satelindo
15F001 = Indonesia, Telkomsel
15F011 = Indonesia, PT. Excelcomindo Excelcom
34F211 = Iran, TCI
14F810 = Iraq, Iraq Telecom
72F210 = Ireland, Eircell
72F220 = Ireland, Esat Digifone
72F230 = Ireland, Meteor
24F510 = Israel, Partner Communications
22F289 = Italy, Blu
22F210 = Italy, Telecom Italia Mobile TIM
22F201 = Italy, Omnitel Pronto

22F288 = Italy, Wind Telecomunicazioni
14F610 = Jordan, J.M.T.S Fastlink
36F930 = Kenya, Kencell
36F920 = Kenya, Safaricom
14F920 = Kuwait, Mobile Telecoms MTCNet
34F710 = Kyrgyz Republic, Bitel
54F710 = Lao, Lao Shinawatra Telecom
42F710 = Latvia, Latvian Mobile Tel.
42F720 = Latvia, BALTCOM GSM
14F510 = Lebanon, FTML Cellis
14F530 = Lebanon, LibanCell
56F110 = Lesotho, Vodacom
16F810 = Liberia, Omega Communications
42F610 = Lithuania, Omnitel
42F620 = Lithuania, UAB Bite GSM
72F010 = Luxembourg, P+T LUXGSM
72F077 = Luxembourg, Millicom Tango GSM
54F510 = Macau, C.T.M. TELEMOVEL+
92F410 = Macedonia, Macedonian Tel. MobiMak
46F610 = Madagascar, Madacom
46F620 = Madagascar, SMM Antaris
46F630 = Madagascar, Sacel
56F010 = Malawi, Telekom Network Callpoint
05F220 = Malaysia, My BSB
05F230 = Malaysia, Binariang
05F221 = Malaysia, Binariang Comms. Maxis
05F231 = Malaysia, Telekom Cellular TM Touch
05F261 = Malaysia, DiGi Telecommunications
05F271 = Malaysia, Time Wireless Adam
05F291 = Malaysia, Celcom
72F810 = Malta, Vodafone
16F710 = Mauritius, Cellplus Mobile Comms
52F910 = Moldova, Voxtel
06F410 = Morocco, Itissalat Al-Maghrib IAM
36F410 = Mozambique, Telecom de Mocambique
46F910 = Namibia, MTC
02F440 = Netherlands, Libertel
02F480 = Netherlands, KPN Telecom
02F421 = Netherlands, Telfort
02F461 = Netherlands, Ben
02F402 = Netherlands, Dutchtone
45F610 = New Caledonia, OPT Mobilis
35F010 = New Zealand, Vodafone
35F030 = New Zealand, Telecom NZ
35F040 = New Zealand, Telstra
42F210 = Norway, Telenor Mobil
42F210 = Norway, Mobilstar
42F220 = Norway, NetCom GSM
24F220 = Oman, General Telecoms
14F010 = Pakistan, Mobilink
13F010 = Papua New Guinea, Pacific Mobile Comms
15F510 = Philippines, Isla Comms
15F520 = Philippines, Globe Telecom
62F010 = Poland, Polkomtel PLUS GSM
62F020 = Poland, ERA GSM
62F030 = Poland, IDEA Centertel
62F810 = Portugal, Telecel Comunicacoes
62F830 = Portugal, Optimus Telecom.
62F860 = Portugal, Telecom Moveis Nac. TMN
24F710 = Qatar, Q-Tel QATARNET
46F701 = Reunion, Societe Reunionnaise SRR
22F610 = Romania, MobiFon CONNEX GSM

22F601 = Romania, Mobil Rom DIALOG
52F010 = Russia, MTS Moscow
52F020 = Russia, North-West GSM
52F050 = Russia, Siberian Cellular
52F070 = Russia, Zao Smarts
52F001 = Russia, Don Telecom
52F021 = Russia, New Telephone Company
52F021 = Russia, Far-Eastern Cellular
52F031 = Russia, Kuban GSM
52F093 = Russia, Uratel
52F044 = Russia, North Caucasian GSM
52F099 = Russia, KB Impuls BeeLine
36F501 = Rwanda, Rwandacell
24F010 = Saudi Arabia, Ministry of PTT Al Jawal
24F070 = Saudi Arabia, Electronics App' Est. EAE
06F810 = Senegal, Sonatel ALIZE
36F310 = Seychelles, Seychelles Cellular Services
36F301 = Seychelles, Telecom AIRTEL
25F510 = Singapore, Singapore Tel. GSM 900
25F520 = Singapore, Singapore Tel. GSM 1800
25F530 = Singapore, MobileOne Asia
25F550 = Singapore, StarHub
32F110 = Slovak Republic, Globtel GSM
32F120 = Slovak Republic, EuroTel GSM
92F304 = Slovenia, SI Mobil
92F314 = Slovenia, Mobitel
56F510 = South Africa, Vodacom
56F501 = South Africa, MTN
12F410 = Spain, Airtel Movil
12F430 = Spain, Retevision Movil
12F470 = Spain, Telefonica Moviles Movistar
14F320 = Sri Lanka, MTN Networks Dialog GSM
36F410 = Sudan, Mobile Telephone Company
42F010 = Sweden, Telia Mobitel
42F070 = Sweden, Comviq GSM
42F080 = Sweden, Europolitan
22F810 = Switzerland, Swisscom NATEL
22F820 = Switzerland, diAx Mobile
22F830 = Switzerland, Orange
14F790 = Syria, Syrian Telecom Est. MOBILE
64F610 = Taiwan, Far EasTone Telecoms
64F660 = Taiwan, TUNTEX Telecom
64F688 = Taiwan, KG Telecom
64F629 = Taiwan, Chunghwa Telecom
64F639 = Taiwan, Mobitai Communications
64F679 = Taiwan, Pacific Cellular TWNGSM
64F699 = Taiwan, TransAsia Telecoms
46F010 = Tanzania, Tritel
25F010 = Thailand, Advanced Info Service AIS
25F001 = Thailand, WCS IQ
25F081 = Thailand, Total Access Worldphone
25F032 = Thailand, Digital Phone HELLO
16F510 = Togo, Togo Telecom TOGO CELL
06F520 = Tunisia, Tunisie Telecom Tunicell
82F610 = Turkey, Turk Telekom Turkcell
82F620 = Turkey, TELSIM Mobil Telekom.
13F020 = U.S.A., APC Sprint Spectrum
13F011 = U.S.A., Wireless 2000 Telephone
13F051 = U.S.A., BellSouth Mobility DCS
13F061 = U.S.A., Omnipoint Communications
13F071 = U.S.A., Pacific Bell Wireless
13F062 = U.S.A., Western Wireless Voicestream

13F072 = U.S.A., Powertel
13F013 = U.S.A., Aerial Communications
13F077 = U.S.A., Iowa Wireless Services
46F110 = Uganda, Celtel Cellular
46F101 = Uganda, MTN Uganda
52F510 = Ukraine, Ukrainian Mobile Comms
52F520 = Ukraine, Ukrainian Radio Systems
52F530 = Ukraine, Kyivstar GSM
52F550 = Ukraine, Golden Telecom
24F410 = United Arab Emirates, UAE ETISALAT-G1
24F420 = United Arab Emirates, UAE ETISALAT-G2
32F401 = United Kingdom, Cellnet
32F451 = United Kingdom, Vodafone
32F403 = United Kingdom, One 2 One
32F433 = United Kingdom, Orange
32F403 = United Kingdom, Virgin Mobile
32F405 = United Kingdom, Jersey Telecom GSM
32F455 = United Kingdom, Guernsey Telecoms GSM
32F485 = United Kingdom, Manx Telecom Pronto GSM
34F410 = Uzbekistan, Buztel
34F440 = Uzbekistan, Daewoo Unitel
34F450 = Uzbekistan, Coscom
37F420 = Venezuela, Digital
37F410 = Venezuela, Infonet
54F210 = Vietnam, MTSC
54F220 = Vietnam, DGPT
22F010 = Yugoslavia, MOBTEL
22F020 = Yugoslavia, ProMonte GSM
46F510 = Zambia, Zamcell
46F810 = Zimbabwe, NET*ONE
46F830 = Zimbabwe, Telecel